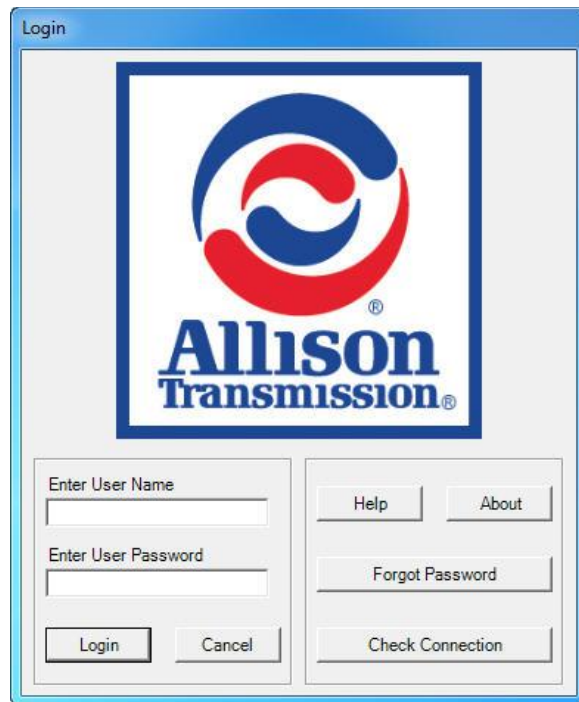


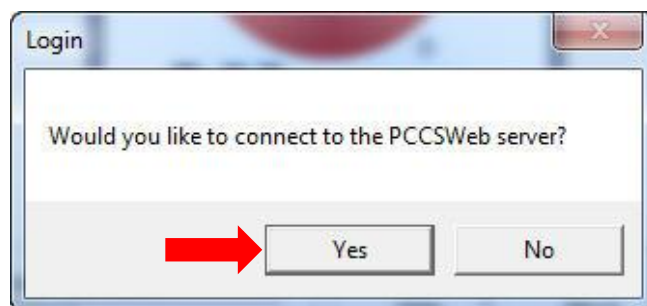
Reflashing a 5th Gen TCM

5th Gen TCMs may be flashed to a Road-ready (fully calibrated) or VEPS-ready condition. This document covers the procedure to create a road-ready (fully programmed) and a VEPS ready 5th Generation Controls TCM. See also TCM Reflash V3.0 User's Guide (GN4137EN)

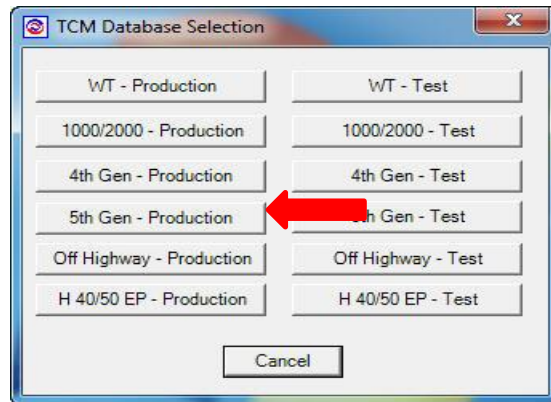
- A. Road-ready TCMs – A Road-ready (fully programmed) TCM is loaded with application software, vocational model calibration, and has all calibration settings applied by an OEM vehicle electronic programming station, Allison Transmission load station, or TCM Reflash. A road-ready TCM is fully functional with shift schedules, input/output functions, and all other calibration features loaded. This is the normal mode that a distributor or dealer will use to reflash TCMs for servicing vehicles which have been placed in service. Create a road-ready TCM as follows:
- Log onto TCM Reflash and click on 5th Gen – Production database button.



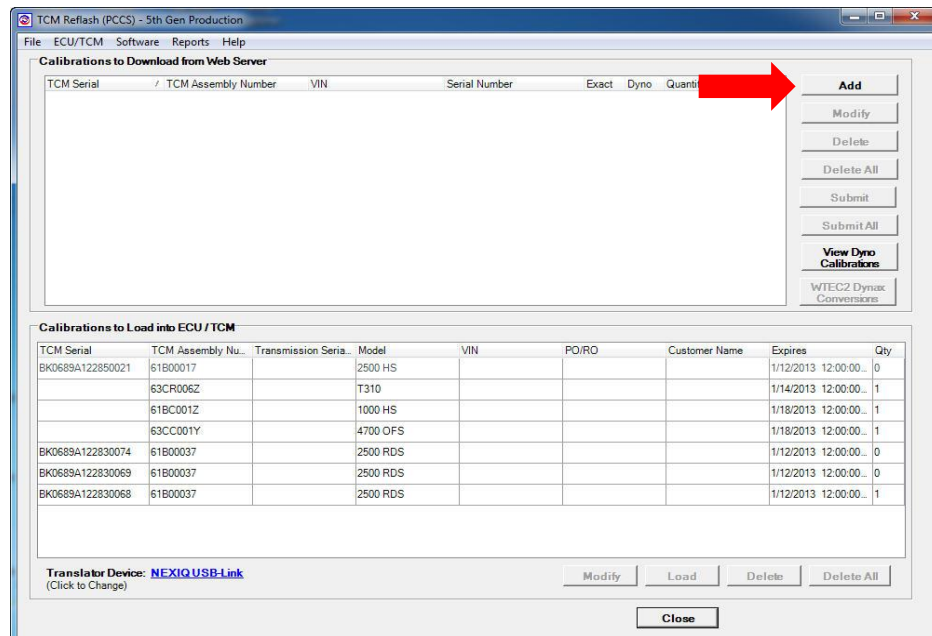
- Click Yes to connect to the PCCSWeb Server.



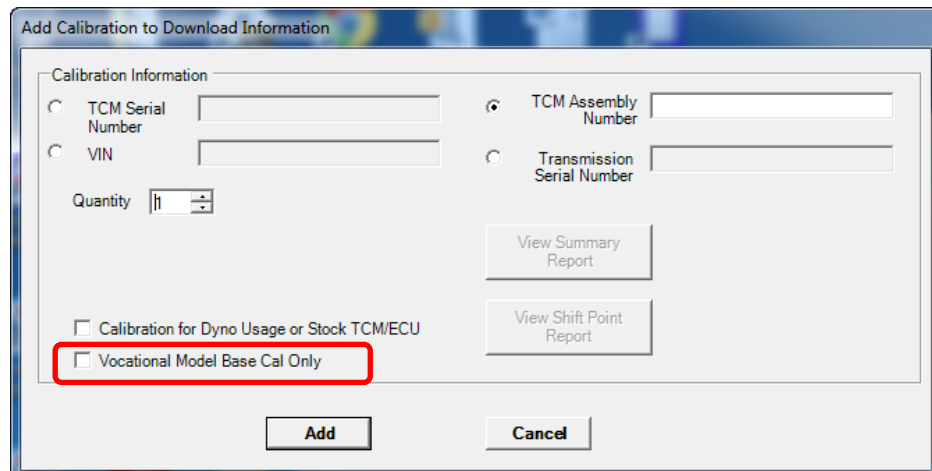
- c. Click on 5th Gen – Production database button



- d. Click Add button



- e. Verify "Vocational Model Base Cal Only" check box is NOT checked.



- f. Select Radio Button next to TCM Serial Number. Enter the serial number of the TCM **that is being replaced**. If updating software/calibration of a road-ready TCM, enter the same serial number as the TCM being updated. *NOTE: A road-ready TCM may also be created by entering a road-ready Allison assembly number (contains an "R" in the fourth digit, i.e. 63BR0032), the vehicle identification number, or transmission serial number.* Click the Add button.

Add Calibration to Download Information

Calibration Information

☒ TCM Serial Number

☐ VIN

☐ TCM Assembly Number

☐ Transmission Serial Number

Quantity

☐ Calibration for Dyno Usage or Stock TCM/ECU

☐ Vocational Model Base Cal Only

- g. Click Submit

TCM Reflash (PCCS) - 5th Gen Production

File ECU/TCM Software Reports Help

Calibrations to Download from Web Server

TCM Serial	TCM Assembly Number	VIN	Serial Number	Exact	Dyno	Quantity	Expires
BK0689A122130018				<input checked="" type="checkbox"/>	<input checked="" type="checkbox"/>	1	1/19/2013

WTEC2 DynaMax Converters

Calibrations to Load into ECU / TCM

TCM Serial	TCM Assembly Nu...	Transmission Seria...	Model	VIN	PO/RO	Customer Name	Expires	Qty
BK0689A122850021	61B00017		2500 HS				1/12/2013 12:00:00..	0
	63CR006Z		T310				1/14/2013 12:00:00..	1
	61BC001Z		1000 HS				1/18/2013 12:00:00..	1
	63CC001Y		4700 OFS				1/18/2013 12:00:00..	1
BK0689A122830074	61B00037		2500 RDS				1/12/2013 12:00:00..	0
BK0689A122830069	61B00037		2500 RDS				1/12/2013 12:00:00..	0
BK0689A122830068	61B00037		2500 RDS				1/12/2013 12:00:00..	1
	61CC0005		4500 RDS				1/19/2013 12:00:00..	1

Translator Device: [NEXIQ USB-Link](#)
(Click to Change)

- h. Highlight the desired TCM serial number and click the LOAD button.

TCM Reflash (PCCS) - 5th Gen Production

File ECU/TCM Software Reports Help

Calibrations to Download from Web Server

TCM Serial	TCM Assembly Number	VIN	Serial Number	Exact	Dyno	Quantity	Expires
------------	---------------------	-----	---------------	-------	------	----------	---------

Add
Modify
Delete
Delete All
Submit
Submit All
View Dyno Calibrations
WTEC2 Dynapac Conversions

Calibrations to Load into ECU / TCM

TCM Serial	TCM Assembly Nu...	Transmission Seria...	Model	VIN	PO/RO	Customer Name	Expires	Qty
BK0689A122850021	61B00017		2500 HS				1/12/2013 12:00:00	0
	63CR0062		T310				1/14/2013 12:00:00	1
	61B00012		1000 HS				1/18/2013 12:00:00	1
	63CC001Y		4700 OFS				1/18/2013 12:00:00	1
BK0689A122830074	61B00037		2500 RDS				1/12/2013 12:00:00	0
BK0689A122830069	61B00037		2500 RDS				1/12/2013 12:00:00	0
BK0689A122830068	61B00037		2500 RDS				1/12/2013 12:00:00	1
	61CC0005		4500 RDS				1/19/2013 12:00:00	1
BK0689A122130018	61C00084		3000 RDS				1/19/2013 12:00:00	1

Translator Device: [NEXIQUSE-Link](#) (Click to Change)

Modify Load Delete All

Close

- i. Verify Current TCM Configuration fields are populated with data. Click OK to load software and vocational model calibration into TCM.

Load Report Form

New Calibration Configuration

Calibration ECU Part #: 61C00084

Calibration ID Number (CIN): C132000849027

Description of ECU compatibility with selected calibration

Current TCM Configuration

TCM/ECU Serial #: BK0689A122130018 Compatibility Level: W13KPRD2M6EF

TCM/ECU Core Part #: 29550689 Software Level: W13KPRD2M6EF

Previously Loaded CIN: C132000849027 ECU Date Co 07-31-2012

Additional Tracking and Barcode Information

Customer Name:

Customer Part #: 61C00084 R/O #:

☐ Dyno Application

Vehicle Identification # (VIN):

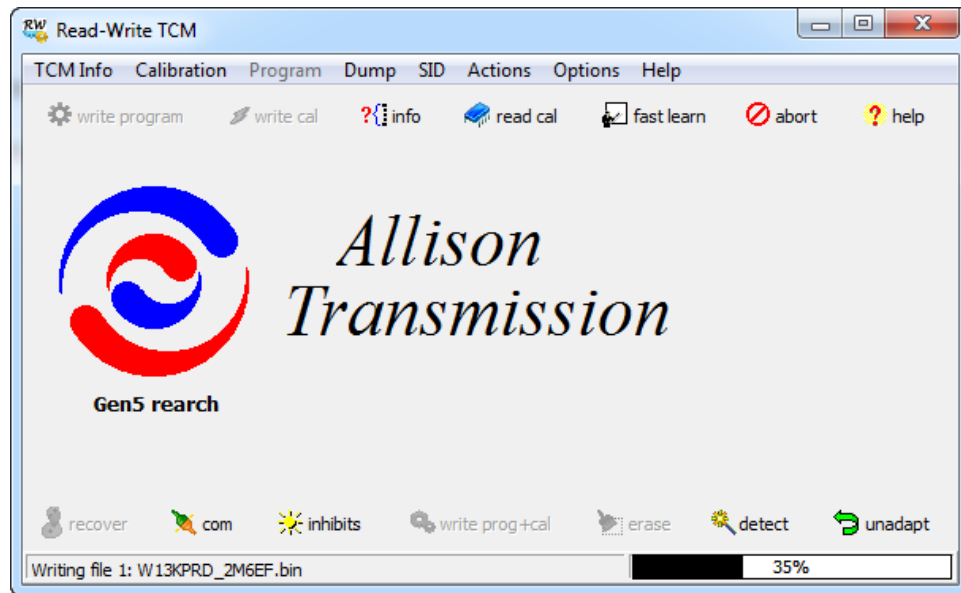
Recal Type 13: Other-(Must Complete Comments Sections) OK

Transmission S/N: Vehicle Model #:

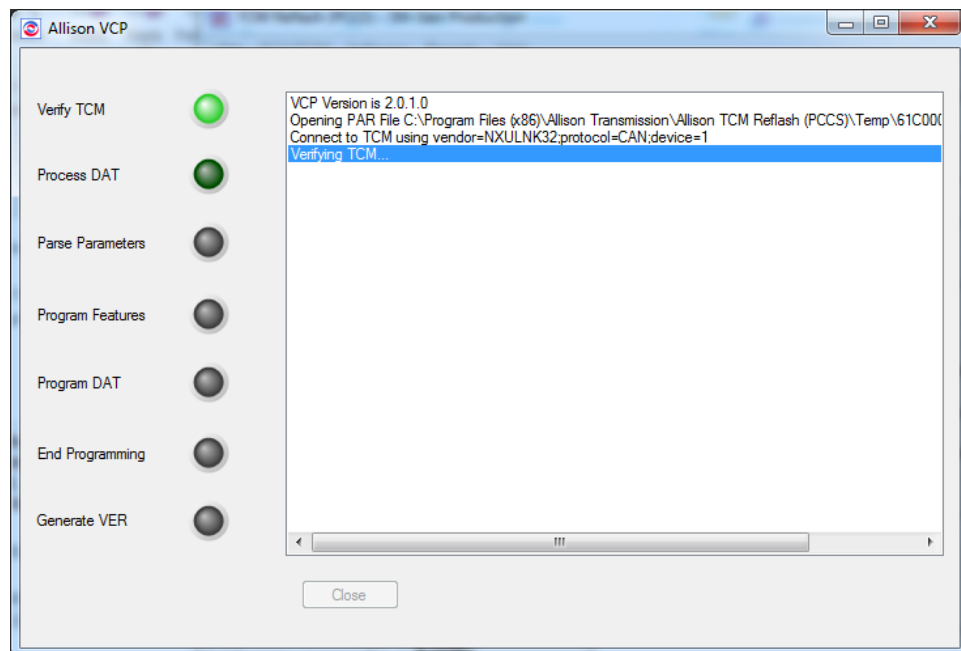
Comments:

Cancel

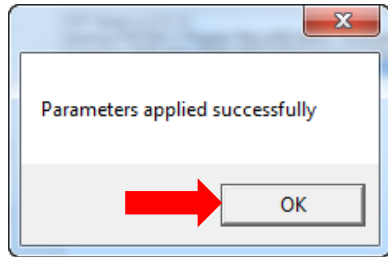
- j. The Allison Read/Write program automatically launches and loads the software and vocational model calibration. NOTE: It can take several minutes for software and vocational model calibration to load.



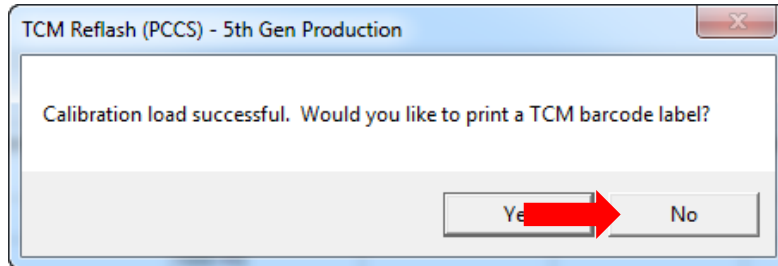
- k. Wait for the Allison Vendor Component Program (VCP) to apply calibration settings. All lights will turn green to indicate successful programming.



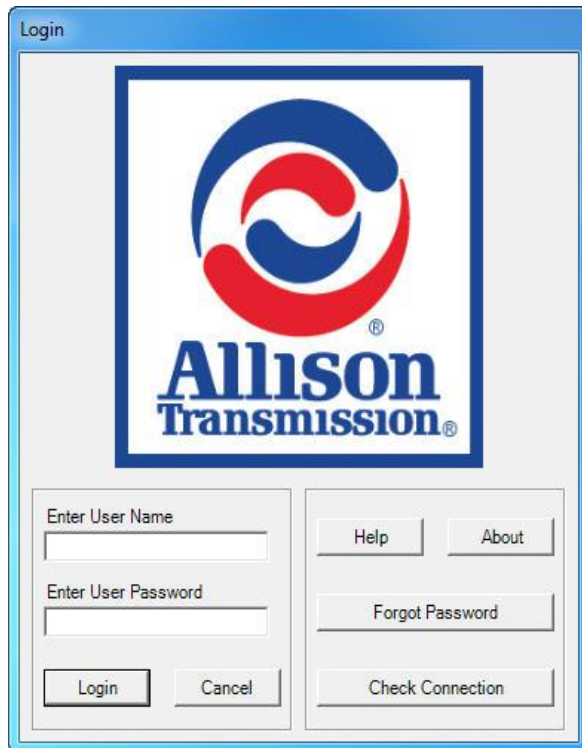
- l. Click OK to acknowledge successful completion of Reflash operation.



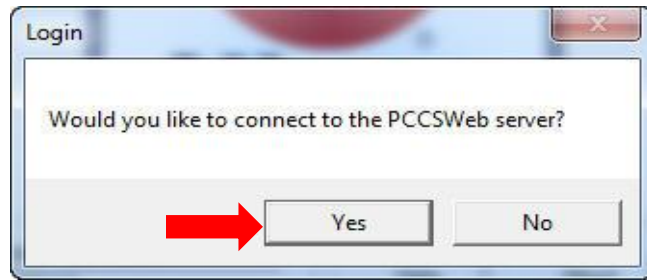
- m. Click NO to skip label printing.



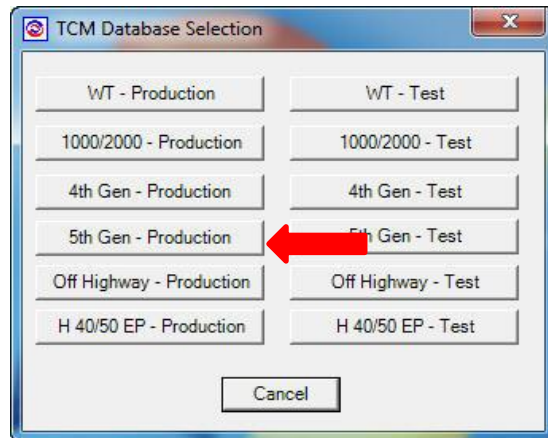
- B. VEPS Ready TCMs – A VEPS Ready TCM is loaded with application software and vocational model calibration only. It is the typical state of a TCM shipped from Allison Transmission to one of its original equipment manufacturers (OEMs) that is using a Vehicle Electronic Programming Station (VEPS); sometimes referred to as *End-of-Line programming*. VEPS Ready TCMs do not have any calibration settings applied. Create a VEPS ready TCM as follows:
- a. Log onto TCM Reflash



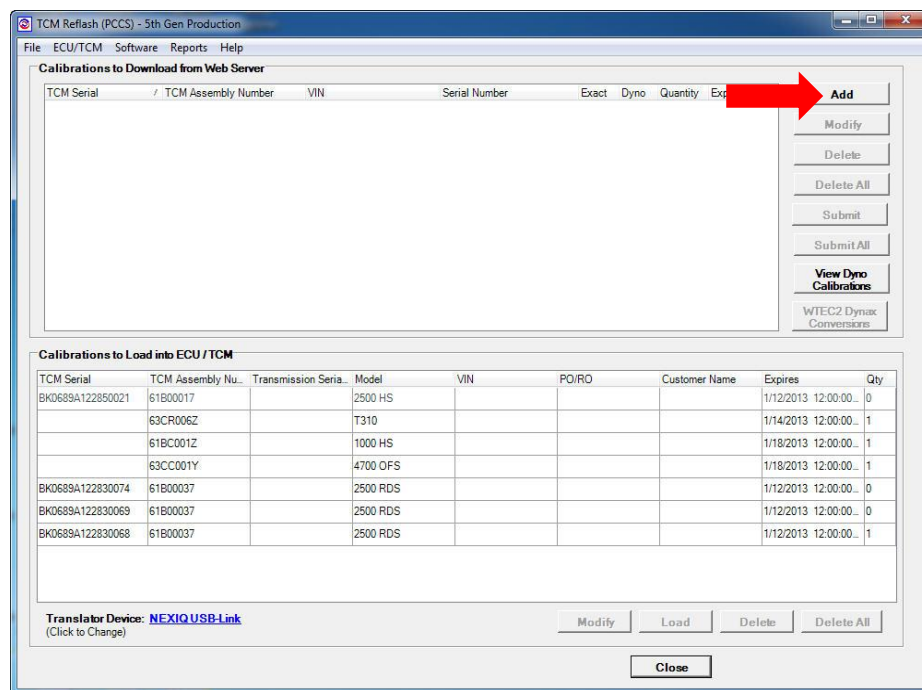
- b. Click Yes to connect to the PCCSWeb Server.



- c. Click on 5th Gen – Production database button



- d. Click Add button



- e. Check “Vocational Model Base Cal Only”

Add Calibration to Download Information

Calibration Information

☐ TCM Serial Number

☐ VIN

Quantity 1

☒ Vocational Model Base Cal Only

☐ TCM Assembly Number

☐ Transmission Serial Number

View Summary Report

View Shift Point Report

Add Cancel

- f. Type the Allison part number shown on the TCM label in the TCM Assembly Number field (see picture of TCM label).

Add Calibration to Download Information

Calibration Information

☐ TCM Serial Number

☐ VIN

Quantity 1

☒ Vocational Model Base Cal Only

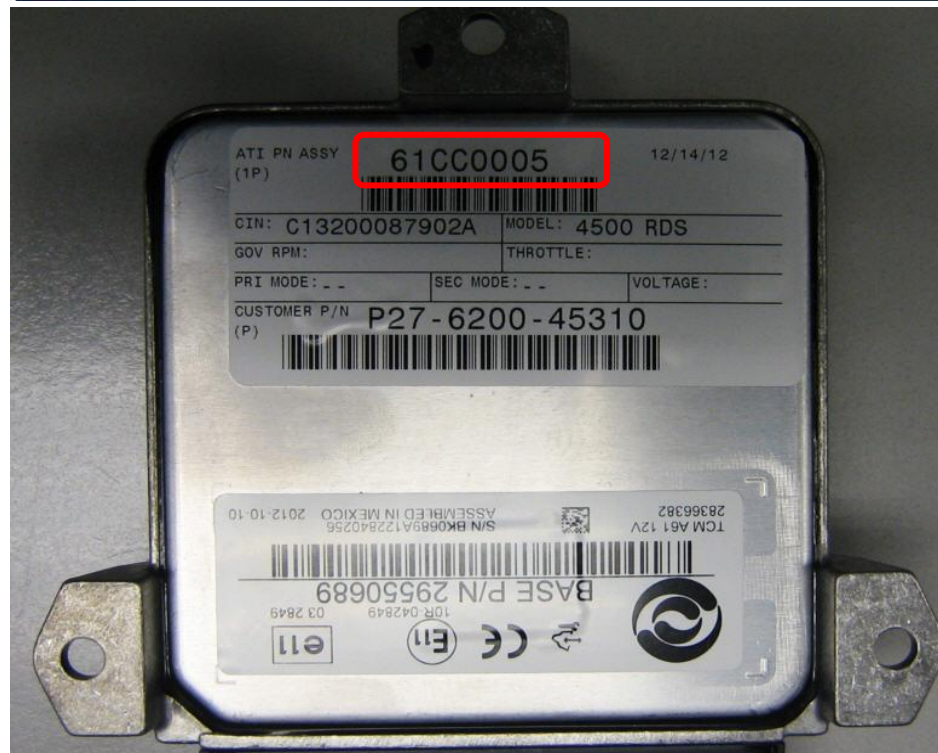
☒ TCM Assembly Number 61CC0005

☐ Transmission Serial Number

View Summary Report

View Shift Point Report

Add Cancel



g. Click Add button

TCM Reflash (PCCS) - 5th Gen Production

File ECU/TCM Software Reports Help

Calibrations to Download from Web Server

TCM Serial	TCM Assembly Number	VIN	Serial Number	Exact	Dyno	Quantity	Expires
	61CC0005					1	1/19/2013

Buttons: Add, Modify, Delete, Delete All, Submit, Submit All, View Dyno Calibrations, WTEC2 Dynac Conversions

Calibrations to Load into ECU / TCM

TCM Serial	TCM Assembly Nu...	Transmission Seria...	Model	VIN	PO/RO	Customer Name	Expires	Qty
BKD689A122850021	61B00017		2500 HS				1/12/2013 12:00:00..	0
	63CR006Z		T310				1/14/2013 12:00:00..	1
	61BC001Z		1000 HS				1/18/2013 12:00:00..	1
	63CC001Y		4700 OFS				1/18/2013 12:00:00..	1
BKD689A122830074	61B00037		2500 RDS				1/12/2013 12:00:00..	0
BKD689A122830069	61B00037		2500 RDS				1/12/2013 12:00:00..	0
BKD689A122830068	61B00037		2500 RDS				1/12/2013 12:00:00..	1

Translator Device: [NEXIQ USB-Link](#) (Click to Change)

Buttons: Modify, Load, Delete, Delete All, Close

h. Click Submit

TCM Reflash (PCCS) - 5th Gen Production

File ECU/TCM Software Reports Help

Calibrations to Download from Web Server

TCM Serial	TCM Assembly Number	VIN	Serial Number	Exact	Dyno	Quantity	Expires
------------	---------------------	-----	---------------	-------	------	----------	---------

Buttons: Add, Modify, Delete, Delete All, Submit, Submit All, View Dyno Calibrations, WTEC2 Dynac Conversions

Calibrations to Load into ECU / TCM

TCM Serial	TCM Assembly Nu...	Transmission Seria...	Model	VIN	PO/RO	Customer Name	Expires	Qty
BKD689A122850021	61B00017		2500 HS				1/12/2013 12:00:00..	0
	63CR006Z		T310				1/14/2013 12:00:00..	1
	61BC001Z		1000 HS				1/18/2013 12:00:00..	1
	63CC001Y		4700 OFS				1/18/2013 12:00:00..	1
BKD689A122830074	61B00037		2500 RDS				1/12/2013 12:00:00..	0
BKD689A122830069	61B00037		2500 RDS				1/12/2013 12:00:00..	0
BKD689A122830068	61B00037		2500 RDS				1/12/2013 12:00:00..	1
	61CC0005		4500 RDS				1/19/2013 12:00:00..	1

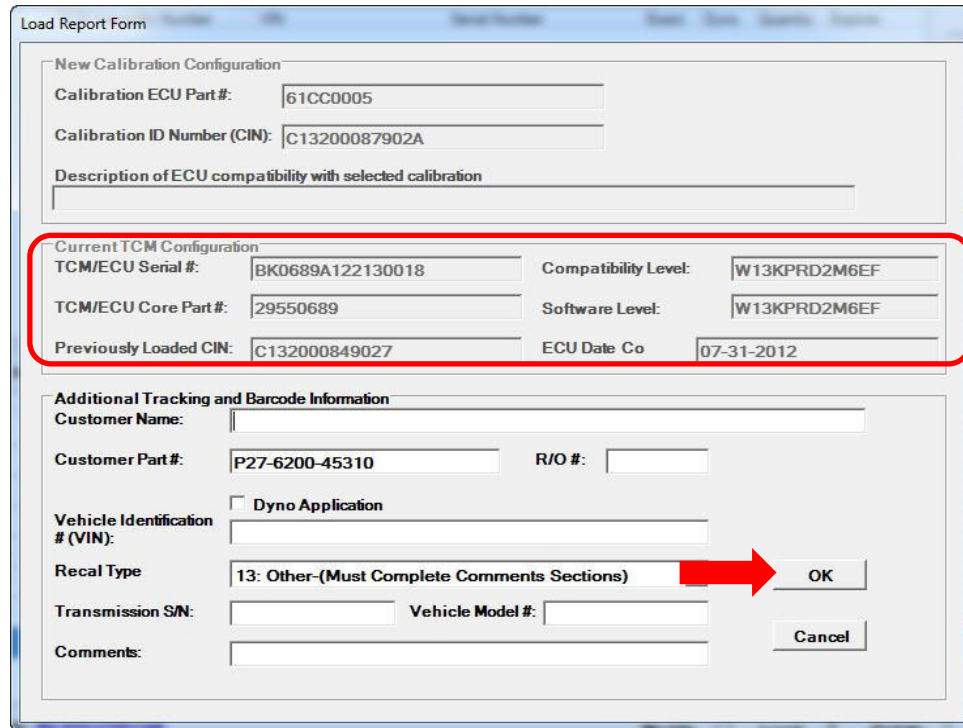
Translator Device: [NEXIQ USB-Link](#) (Click to Change)

Buttons: Modify, Load, Delete All, Close

i. Verify translator device is selected. Click blue link to change.

j. Highlight desired TCM Assembly Number (in this case 61CC0005), and click the Load button.

- k. Verify Current TCM Configuration fields are populated with data. Click OK button to load software and vocational model calibration into TCM.

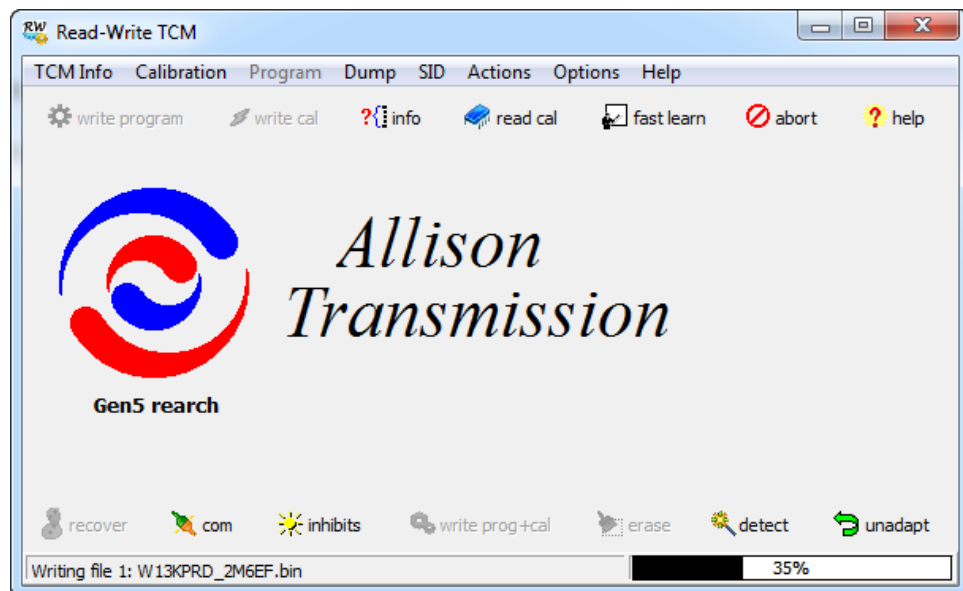


The 'Load Report Form' dialog box contains the following sections:

- New Calibration Configuration:**
 - Calibration ECU Part #: 61CC0005
 - Calibration ID Number (CIN): C13200087902A
 - Description of ECU compatibility with selected calibration: (empty text box)
- Current TCM Configuration (highlighted with a red box):**
 - TCM/ECU Serial #: BK0689A122130018
 - TCM/ECU Core Part #: 29550689
 - Previously Loaded CIN: C132000849027
 - Compatibility Level: W13KPRD2M6EF
 - Software Level: W13KPRD2M6EF
 - ECU Date Co: 07-31-2012
- Additional Tracking and Barcode Information:**
 - Customer Name: (empty text box)
 - Customer Part #: P27-6200-45310
 - R/O #: (empty text box)
 - ☐ Dyno Application
 - Vehicle Identification # (VIN): (empty text box)
 - Recal Type: 13: Other-(Must Complete Comments Sections)
 - Transmission S/N: (empty text box)
 - Vehicle Model #: (empty text box)
 - Comments: (empty text box)

Buttons: OK, Cancel. A red arrow points to the OK button.

- l. The Allison Read/Write program automatically launches and loads the software and vocational model calibration. NOTE: It can take several minutes for software and vocational model calibration to load.



- m. Click No to skip label printing.

